

Command words – GCSE Revision

© www.teachscience.co.uk 2014

22497

1

What are command words?

- Command words are important words in examination questions.
- They tell you what you actually have to do.
- You need to understand the command words so that your answer is focussed and appropriate.
- One command word is **COMPARE ...**

© www.teachscience.co.uk 2014

22497

2

The command word – compare ...

- **Compare** – This describes the similarities **and** differences between two things (e.g. between two cells).
- **But ...** Two *separate* accounts do not make a comparison unless the second account refers back to the first.
- A good technique would be to use comparative adjectives (describing words) – e.g. larger than, deeper than, lasted longer than etc.

© www.teachscience.co.uk 2014

22497

3

Compare these two images What are the similarities & differences?



© 2010 Tony Harrison
<http://www.flickr.com/photos/tonysphotos/5034210326>

© 2012 Dave Calchpole
<http://www.flickr.com/photos/yaketyyak/7964862202>



© www.teachscience.co.uk 2014

22497

4

Compare these two images What are the similarities & differences?



© 2008 Abhijit Tembhkar
http://en.wikipedia.org/wiki/File:Red_Apple.jpg



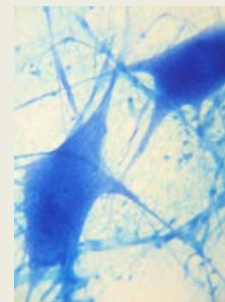
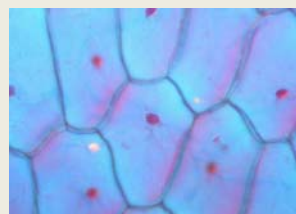
© 2007 Yasser Alghofly
<http://www.flickr.com/photos/eyae/1464567142>

© www.teachscience.co.uk 2014

22497

5

Compare these two types of cells ...



© www.teachscience.co.uk 2014

22497

6

What do these command words mean?

- **Describe** – accurately recall some facts, events or processes
- **Explain** – give reasons as to why something happens
- **Complete** – write answers in the spaces given e.g. in a table, diagram or in a sentence
- **Calculate** – use the data given, show working, include units
- **State, give, name** – a short answer - one word, phrase or sentence.
- **Suggest** – apply your knowledge and understanding to a new situation
- **Evaluate** – use information given and your own knowledge and understanding to weigh up a particular situation by considering evidence for/against. Give a clear, justified conclusion.